



Annual  
Report  
**2023**

**COMMUNITY  
FOUNDATION**  
FOR THE OHIO VALLEY



# Contents

- 2** Staff and Board Members
- 3** Letter from the Chair & Executive Director
- 4** Timeline
- 6** Financials
- 8** Interview with C.J. Kaiser
- 9** Interview with Sue Siebert Farnsworth
- 10** Funds of the Community Foundation
- 12** Interview with Christine Hargrave
- 13** Fund Gifts
- 18** Interview with Dr. Larry Jones
- 19** Scholarship Recipients
- 22** Interview with Lova Ebbert
- 23** Grants & Distributions

## Staff

**Susie Nelson**

*Executive Director*

**Melissa Ceo**

*Director of Communications*

**Janet Nolan**

*Office Manager &  
Director of Stewardship*

**Liz Paulhus**

*Director of Donor Services*

**Jess Puglisi-Sanders**

*Program Officer*

**Debbie Stanton**

*Program Officer*

**Lexi Smith**

*Accountant*

## Board of Directors

*President*

**KRISTINE MOLNAR**

*Vice-President*

**DAVID KAPPEL, M.D.**

*Secretary*

**JIM SQUIBB**

*Treasurer*

**BERNADETTE SMITH**

**ANGELINA CALCOTE**

**MARYANN CATER**

**DAVID CROFT**

**ROBERT CUPP, JR.**

**JAY FREY**

**JAY GOODMAN**

**DEB HASSIG**

**JOHN HOLLOWAY, M.D.**

**H. LAWRENCE JONES, ED.D.**

**CHARLES J. KAISER, JR.**

**JEFFREY KNIGHT**

**DAN MCCUNE**

**TULANE MENSORE**

**MARLENE MIDGET**

**WILLIAM PARAS**

**ELSIE REYES**

**DAVID ROBERTSON**

**MARY ROHRIG**

**ANTHONY "RICO" RUIZ**

celebrating our  
**50<sup>th</sup>**  
Anniversary

# Dear Friends & Supporters,

As we write to you, the Community Foundation for the Ohio Valley (CFOV) marks its semicentennial anniversary - a golden era of philanthropy, community service, and steadfast growth in the Upper Ohio Valley. This year, as we celebrate 50 years of impact and service, we also reflect on our beginning, our milestones, and the ever-evolving needs of the community that shape our work.

The establishment of the Foundation in **1972** set in motion a legacy of local enrichment and dedication to the public good—a sentiment embedded into the very walls of our office at 1226 Chapline Street. It was in this building, in 1972, that Richard G. Herndon drafted our Articles of Incorporation, laying the groundwork for a half-century of service to the Upper Ohio Valley. Our organization has grown to manage \$75 million in assets, demonstrating the power of collective generosity and foresight.

Throughout the years, CFOV has navigated changes and embraced opportunities with our mission consistently at the forefront: to enhance the vibrancy of our region through charitable actions and community leadership. Our vision remains clear - to see an Upper Ohio Valley with potential and opportunities for all.

The story of CFOV is filled with notable achievements, including the landmark establishment of the Community Impact Fund in 1987, office openings, and strategic mergers that expanded our reach and capability. The establishment of a physical presence in 1997 has allowed us to foster closer relationships with our donors and community partners. Our merger with the Community Foundation of Jefferson County and the Weirton Area Community Foundation strengthened our regional influence and partnership, furthering our commitment to collective impact.

Our 50th year was not without its wins; we opened 22 new funds and distributed over \$3.2 million in grants, a testament to the trust and collaboration we have built with our partners in philanthropy. These numbers tell a story of community support and a shared desire to uplift our valley.

Though we are defined by the work of the past 50 years, we are driven by the promise of the future. In 2023, we remain committed to our strategic grantmaking, which has yielded positive impacts throughout our counties. We face the new year with the responsibility to maintain this momentum, fortifying our efforts to support community betterment and measurable positive change.

Our journey from a foundational organization with a single contribution to managing a robust asset portfolio showcases the power of vision combined with community support. As we honor our rich history, we also prepare for the future, ensuring CFOV remains a perpetual resource for good in the Upper Ohio Valley.

On behalf of our Board of Directors, staff, and countless community partners, thank you for joining us on this remarkable journey. Your support makes our work possible. Together, we have created a legacy of giving that will continue to resonate for the next fifty years and beyond.

**With sincere thanks and anticipation for what lies ahead,**

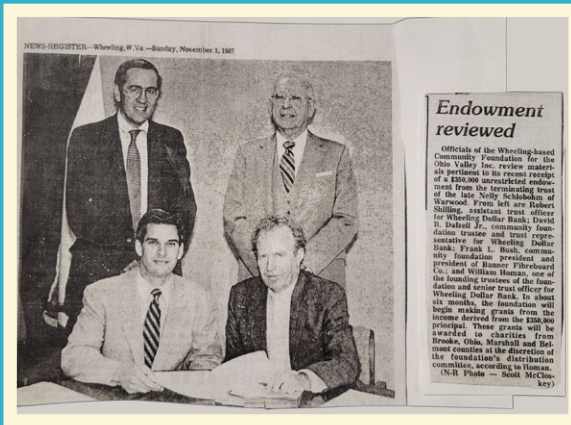
*Kristine Molnar* BOARD CHAIR

*& Susie Nelson* EXECUTIVE DIRECTOR

COMMUNITY FOUNDATION FOR THE OHIO VALLEY



# Timeline



1987

## COMMUNITY IMPACT FUND

ESTABLISHED FROM THE ESTATE OF NELLIE SCHLOBOHM

1999

First Paid Executive Director Hired

1992

ASSETS EXCEED 1 MILLION

2006

ASSETS EXCEED \$19 MILLION

1972

ARTICLES OF INCORPORATION ARE NOTARIZED

1972 1974

1987

1988

1992

1997

1999

2000

2006 20

1974

Inaugural Event HELD AT WHEELING COLLEGE

1997

FIRST OFFICE OPENED

AT 60 12TH STREET, WHEELING WV

1988

First Annual Report Published

2000

BOARD OF DIRECTORS



# 2011



## WOMEN'S GIVING CIRCLE FOUNDED



# 2019

1226 CHAPLINE STREET,  
WHEELING WV

## BUILDING PURCHASED



# 2015

## MERGER WITH WEIRTON AREA COMMUNITY FOUNDATION



# 2013

## Belmont County Enrichment Fund Formed

# 2021



## ASSETS EXCEED \$71 MILLION

2007 2011 2012 2013 2015 2018 2019 2020 2021 2022

# 2007

## STEALY FUND ESTABLISHED



# 2012

## MERGER WITH COMMUNITY FOUNDATION OF JEFFERSON COUNTY

# 2020

## EMERGENCY IMPACT FUND GRANTED \$330K FOR COVID RESPONSE

# 2018

## Assets Exceed \$52 MILLION



Back row (l-r): Jerome B. Schmitt, William J. Yaeger, Jr., Edward (Ted) Gompers, C.J. Kaiser, Jr., Frederick Dean Rohrig, William O. Nutting, David B. Dalzell, Jr., James C. Gardill  
Front row (l-r): Ray A. Byrd, Jean A. Mulroy, Sue Seibert Farnsworth, Ruth K. Wagner, Joseph W. Boutaugh, Mark C. Ferrell  
Not Pictured: Joseph N. Gompers, James E. Altmeyer, Alison M. Meeks, C. Joe Mullen, Lee C. Paull, III, Dr. Rizal V. Pangilinan, James G. Squibb, Jr.



# Financials

**GRANTS**  
TOTALING MORE THAN:  
**\$3.2M**

**SCHOLARSHIPS**  
TO HELP STUDENTS ATTAIN THEIR  
HIGHER EDUCATION GOALS:  
**\$505,799**

**ASSETS**  
AS OF JUNE 30TH 2023  
**\$78,584,828**

**CONTRIBUTIONS**  
**\$3.16M**

## New FUNDS

- Captina Conservancy Endowment Fund
- CASA For Children Endowment Fund
- Cockayne Farmstead Endowment Fund
- Connie and Marvin LeGrande Memorial Scholarship Fund
- Dean Martin Statue Fund
- Dr. John and Rosalind Mattox Underground Railroad Museum Endowment Fund
- Elikan Community Fund
- Family Service - Upper Ohio Valley Endowment Fund
- First Presbyterian Church of Wellsburg Fund
- Helen T. Arkwright Fund
- Hieronimus Family Fund
- James & Betty Kinsey Scholarship Fund
- Janie Altmeyer Think Pink Fund
- Kenneth R. Dennis Field of Interest Fund
- King's Daughters Endowment Fund
- Mey Family Fund
- Ohio Valley Health Center Endowment Fund
- Ohio Valley Jaycees Charitable Fund
- Sistersville Ferry Endowment Fund
- Upper Ohio Valley Sexual Assault Help Center Endowment Fund
- Wheeling 250 Commemorative Video Fund
- YWCA Wheeling Endowment Fund

# Grants By Program





**For our  
50th Anniversary,**  
we're recognizing  
individuals who've  
played significant  
roles in our  
Foundation's journey.  
These are their stories.



## C.J. Kaiser

Current Community Foundation for the Ohio Valley Board Member C. J. Kaiser joined in 1988, at a time when the organization was in its infancy with less than \$1 million in assets, no employees, and no physical office. Kaiser's vision and dedication were pivotal in transforming CFOV into a dynamic force for community betterment. "When I joined the Board, the Foundation was primarily a conduit for pass-through funds. My goal was to see it become a central part of our community's philanthropic fabric," Kaiser reflected on his early days at the Foundation.

Kaiser's tenure at CFOV was marked by strategic decisions that significantly enhanced its role in the community. His efforts in recruiting the first executive director and securing a dedicated office space were pivotal in elevating the Foundation's profile and operational capabilities. Reflecting on these achievements, Kaiser said, "Establishing a permanent home for CFOV was a turning point. It underscored our dedication to creating lasting, positive change in the community."

During his decade as Board President, Kaiser's leadership was a driving force behind CFOV's remarkable growth, with its assets expanding from \$3.5 million to \$20 million. He viewed this increase as more than a financial achievement, emphasizing its broader impact: "The growth of our assets mirrors our growing bond with the community. It symbolizes our ability to adapt and respond to the changing needs of the Ohio Valley." This approach underlines Kaiser's commitment to translating the Foundation's financial growth into meaningful community support and development.

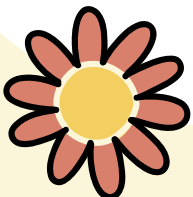
**As we celebrate 50 years of the Community Foundation for the Ohio Valley, we honor C. J. Kaiser's legacy – a legacy of thoughtful leadership, strategic growth, and a deep commitment to the betterment of the Upper Ohio Valley.**

His contributions have been instrumental in shaping the Foundation into a significant community resource, ensuring that it remains a perpetual force for good in the region. Kaiser's story is a testament to the power of dedicated individuals in steering community-focused organizations towards a brighter and more impactful future.



*"The best measure  
of our success today  
will be where the  
Community Foundation  
is ten or twenty years  
from now."*

C. J. KAISER - 2006







## Sue Seibert Farnsworth

Sue's involvement with CFOV began through her legal expertise in estate planning. "I became involved because my law practice was focused on wills, trusts, estates, and future planning," she recalls. This expertise aligned seamlessly with the Foundation's mission of fostering long-term community growth through strategic philanthropy. Her work guided clients in their estate planning and ensured their charitable legacies for future generations.

One of Sue's notable achievements within the CFOV was her key role in founding and nurturing the Women's Giving Circle. This initiative, which began in October 2010 with just 17 members, has grown into a robust community of over 100 women. The Circle is a pillar of philanthropy in the region, distributing an impressive \$493,000 in grants to various organizations. The funds have significantly advanced the mission of supporting women and girls in the community, focusing on critical areas such as education, economic empowerment, physical and mental health, and addressing violence and crime. "Membership is why it exists," Sue says, underscoring the importance of an engaged and dedicated membership in driving the Circle's mission.

Sue's tenure as a board member from 1997 - 2018, including a year as Chair, was marked by her deep understanding of the region's needs and her commitment to addressing them. She played a critical role in guiding the Foundation, always keeping the community's best interests at heart. Sue's leadership, particularly in fostering the Women's Giving Circle, exemplifies how structured, community-focused efforts can bring about meaningful change.

**As we commemorate 50 years, Sue Seibert Farnsworth's legacy within the CFOV stands as a testament to the impact of dedicated leadership.** Her belief in the power of collective philanthropy ensures that her influence will endure, inspiring new generations to champion the causes close to their hearts. Her story is not just one of personal achievement, but a clear example of how committed leadership can inspire progress.



# Funds of the Community Foundation

## Unrestricted Funds

Provide the greatest discretionary flexibility to CFOV in its goal of responding to changing community needs and emerging opportunities. These funds are used to support our grantmaking and community impact programs.

Community Impact Fund  
Community Leader Internship Program  
Douglas Naylor First Family Legacy Fund  
Fredrick G. Weimer Fund  
FXB Fund  
Jimenez Charitable Fund  
J & J Boutaugh Fund  
Joan & Lee Kelvington Fund  
Joseph & Gretchen E. Strauss Fund  
Pauline Barnes Fund

## Field of Interest Funds

Support fields of special concern (e.g. the arts, education, at-risk youth) to the donors or a specific geographic area. CFOV makes distributions from the fund in adherence to the fund's scope.

Jefferson County Fund  
Joseph & Marilyn Fraker Animal Care Fund  
Kathryn B. Snively Fund  
Kenneth R. Dennis Field of Interest Fund  
Margaret Dankworth Memorial Fund  
Marilyn A. Collett Memorial Fund  
Mark Eddie Rockin' Juvenile Diabetes Fund  
Marshall County Fund  
MGC Fund  
Racial Equity and Social Justice Fund  
Viking Fund  
Wetzel County Fund  
Williams Fund

## Donor Advised Funds

Enable donor advisors to recommend grants to their preferred IRS-qualified public charities for charitable purposes on a timeline that suits them. These funds serve as practical, flexible, and engaging philanthropic instruments for people, corporations, clubs, and more.

Aaron Davies Charitable Fund  
Advancing Racial Justice in WV Fund  
An Answered Prayer Fund  
Andy Hogan Charitable Fund

Angel Fund  
Anonymous Fund I  
Anonymous Fund II  
Bailey Family Fund  
Belmont County Endowment Fund  
Belmont County Enrichment Fund  
Beth Raimonde Weaver Fund  
Breaking Barriers for a Better Community Fund  
Bridgeport Educational Assistance Fund  
C. Tim Meighen Memorial Fund  
Cattrell Family Fund (In Memory of George & Robert Cattrell)  
Charles Lando Memorial Fund  
Charles R. & Fred R. Wilcox Family Memorial Fund  
Drs. Madhu and Krishan Aggarwal Family Fund  
Eastern Ohio Dental Society Oral Health Care Fund  
Edward and Marisa Nolan Family Fund  
Elizabeth S. Hess-Gebhard Fund  
First Presbyterian Church of Wellsburg Fund\*  
Former Martins Ferry Kiwanis Club Fund  
Foundation for Appalachian Ohio Youth Fund  
Fred R. & Jessie E. Wilcox Memorial Fund  
Fred R. Wilcox Memorial Fund  
George Charles "Charlie" Hughes III Memorial Fund  
Give Wetzel County Fund  
Glaub Family Fund  
Glory to Christ Fund  
Gompers Fund  
Goodman Family Fund  
Hess Family Fund  
Hieronymus Family Fund\*  
James B. Chambers Memorial Foundation Fund  
James McCune Foundation Fund  
Janie Altmeyer Think Pink Endowment Fund  
Janie Altmeyer Think Pink Fund  
Jefferson County Emergency Responder Fund  
Jerry and Lova Ebbert Fund  
John and Kristina Kramer Charitable Fund  
Joseph Krivak Memorial Fund  
Kaiser Family Fund  
Laughlin Chapel Endowment Fund  
Lawrence E. Bandi Charitable Fund  
Louis and Emma Salvatori Fund  
Lynne & Ben Exley IV Charitable Fund  
Marshall County Society for Disabled Children & Adults Fund  
Mary Ann Hess Fund  
Matt Velez Save A Life Fund  
McKinley Carter Cares Fund  
Mey Family Fund\*  
Miller Family Fund  
Mrs. Elizabeth & Br. Michael Mullin Fund  
Nolte Family Fund  
Nutting Fund  
Ohio Valley Jaycees Charitable Fund\*  
Ohio Valley Wrestling Coaches Association Fund  
OV Foundation Fund  
Patrick J. & Kathleen McDermott Fund  
Phil Lewton Memorial Sportsmanship Fund  
Raise Your Game Fund  
Robert C. Hargrave Memorial Fund  
Robinson Family Fund  
Romeo and Elsie Reyes Family Fund

Rotary Club of Weirton Heights Fund  
Southwestern Energy  
Stealey Community Fund  
Stealey Reserve Fund  
Steubenville Revitalization Group Fund  
Stuart and Stephanie Bloch Memorial Fund  
Susie Fadoul Memorial Fund  
Terek Family Fund  
Thieroff Family Fund  
Tri-State Filipino American Association Fund  
Two Bridges Fund  
Urban Youth Work Endowment Fund  
Vaughn Family Fund  
Veterans Fund (Park Dances Revisited)  
Watkins Utica Fund  
Wetzel Family Fund  
Wheeling Automobile Club Fund  
Wheeling-Nissin Fund  
Wilma J. Grimes Fund  
Women's Giving Circle  
Women's Giving Circle Endowment Fund

## Designated Funds

Provide ongoing, annual support to specific nonprofit organizations selected by the donor when the fund is established.

Alice Crow Parriott Fund  
Amaya-Johnson Fund  
Andrew Goldstrom Fund  
Barbara A. Steele Fund  
Barnesville High School Shamrocks Soccer Fund  
Bellaire Emerging Leader Award Fund  
Benjamin C. Ybanez Memorial Fund  
Bennett Family Fund  
Boots Jarvis Memorial Fund  
Brigid O'Brien Fund  
CCHS Scholarship Fund  
Charles & Mary Gantzer Fund  
Chester R. Hubbard Memorial Aid Society Fund  
Cochrane Moneske O'Brien Charitable Fund  
Coudon Hall Fund  
Courtney & Danielle Block Memorial Scholarship Fund Sponsored by UPS  
Deever Family Fund  
Earl Gompers & Bernice Grewe-Gompers Fund  
Edna Kiger-Rapp Fund  
Elikan Community Fund\*  
Elikan Fund  
Elizabeth Stifel Kline Fund for CFOV  
Elizabeth Stifel Kline Fund for United Way  
Evelyn G. Engler Fund for the Seeing Hand Association  
Evelyn G. Engler Fund for Easter Seals  
Franco J. DeSantis Memorial Fund  
Friends of Wetzel County Animal Shelter Supporters Fund  
George V. Thieroff, Sr., Donor Designated Fund  
George Zatezalo Memorial Scholarship Fund  
Gilbert S. Bachmann Memorial Fund  
Helen P. Rowley & Leonard Rowley Memorial Fund  
Helen T. Arkwright Fund\*  
H. Lawrence Jones Fund  
Irene Meagel Fund  
James & Betty Kinsey Legacy Fund  
James, Louise and Clyda Manley Fund  
John & Alia Karras Family Fund  
John Marshall High School Scholarship Fund  
John Oliver Rankin, MD Memorial Fund  
Julia Schaltenbrand Endowment Fund  
Kalb Family Fund  
Kelly Dolan Memorial Fund  
Lawrence E. Bandi Fund  
Lee Ann Foundation for Victims of Breast Cancer  
Leon Berze Memorial Scholarship Fund  
Lisa Cockayne Animal Care Fund  
Madalyn McCreary Memorial Fund  
Mary's Provisions for the Poor Fund

Messino-Wehrheim Fund  
 Michal and Betty Karras Memorial Fund  
 Mount Wood Cemetery Fund  
 Music Magic Fund  
 Nolte Animal Fund  
 Pamela Sue Kennen Blevins Legacy Fund  
 Pangilinan-Torres Charity Fund  
 Paul H. & E. Ruth Eddy Memorial Scholarship Fund  
 Peterson Community Fund  
 Pine Grove Library Fund  
 Racam Agriculture Education Fund  
 Rachael Worby Scholarship Fund  
 RDH12 Fund for Sight  
 Richard R. Heagin Memorial Fund  
 Robert W. Schramm West Liberty State College  
 Science Fair Fund  
 Robin Drennan Memorial Volleyball Scholarship Fund  
 Roslyn & Charles Lando Fund  
 Stan Sobel Memorial Fund  
 St. Clairsville Public Library Foundation Fund  
 St. John the Divine Living Memorial Endowment Fund  
 St. Matthew's Lutheran Church Fund  
 Union Local Schools Curriculum Enhancement Fund  
 Wes Wagner Art Scholarship  
 Wetzel County Hospital Fund  
 W. Frederick Bartholomew Fund  
 Wheeling Health Right Watkins Family  
 Endowment Fund  
 Wheeling Middle School Boosters Club Fund  
 Whipkey Charitable Fund  
 William H. Homan Founders Fund  
 Women's Giving Circle Lifetime Fund  
 WPHS Athletic Boosters Fund  
 W. Thornley and Grace M. Hunt Memorial  
 Scholarship Fund  
 Youth Club of Marshall County Fund

## Scholarship Funds

Assist students in achieving their academic aspirations. Donors have the option to specify the qualifications for scholarship candidates or to entrust the selection process to the Foundation.

Aaron Davies Memorial Scholarship Fund  
 AAUW Beulah Boyd Scholarship Fund  
 Barnesville High School Class of 1979 Scholarship  
 for Academic Excellence  
 Beulah Meyer Scholarship Fund  
 Bradley A. Miller, Jr. Scholarship Fund  
 Carl Rollyn "Pop" & Grace B. Sullivan Scholarship Fund  
 Connie & Marvin LeGrande Memorial Scholarship Fund\*  
 David Robertson Scholarship Fund  
 Deever Family Scholarship Fund  
 Donivon E. Adams Memorial Scholarship Fund  
 Dr. Jim Mills Scholarship Fund  
 EQT Scholarship Fund  
 Frances S. & Stephen E. Pritchard Scholarship Fund  
 Frank Ferguson Memorial Scholarship Fund  
 Fraternal Order of Police Association Scholarship Fund  
 Gene DeProsperis Scholarship Fund  
 Glenda K Follett Memorial Scholarship Fund  
 Helen Biery Memorial Scholarship Fund  
 Howard Corcoran Memorial Scholarship Fund  
 IAFF Local #12 Scholarship Fund  
 Jack & Charolette Nelson Scholarship Fund  
 Jack & Mary Burgbacher-Carpenter Scholarship Fund  
 James & Betty Kinsey Scholarship Fund  
 Jan Meyhew Graham Scholarship Fund  
 Jerome B. Schmitt Scholarship Fund  
 John & Becky Wright First Generation College Fund  
 John & Norma Miller-Daffin Family Foundation  
 Scholarship Fund  
 John H. & Dorothy M. Zmavec Scholarship Fund  
 John J. & Tulane B. Mensore Scholarship Fund  
 John M. & Wanda D. Brown Scholarship Fund  
 John Nicholas Varlas & Nancy Allen Varlas  
 Scholarship Fund

John Racer Memorial Scholarship Fund  
 Joseph M. & Annale R. Wells Scholarship Fund  
 Joseph P. Mull, Jr. & Virginia P. Mull Scholarship Fund  
 Joy Cox Nursing Memorial Scholarship Fund  
 Kathleen Simmons Batalion Memorial Scholarship Fund  
 Kenneth R. Dennis Scholarship Fund  
 Leora & Mildred LaRue Scholarship Fund  
 Lisa Cockayne Scholarship Fund for JMHS  
 Lloyd, Shirl & Esta Mae Taggart Scholarship Fund  
 Maryanne K. Pflug Memorial Scholarship Fund  
 May Green Scholarship Fund  
 Mike G. Dotson Scholarship Fund  
 Mulholland Futures Scholarship Fund  
 N. Elizabeth Elbin Memorial Scholarship Fund  
 Ohio County Bar Association Scholarship Fund  
 Orrick, Herrington & Sutcliffe GOC Scholarship Fund  
 Pat Bland Memorial Scholarship Fund  
 Pat Johnson Memorial Scholarship Fund  
 Patrick A. Clutter Scholarship Fund  
 Polish American Patriot Club Scholarship Fund  
 Ruth B. & William L. Gilligan Scholarship Fund  
 Smaltz Family Scholarship Fund  
 St. Matthew's Lutheran Church Scholarship Fund  
 Sylvia Archer Scholarship Fund  
 Tikkun Olam Scholarship of Temple Beth Israel  
 of Steubenville  
 Trinity Evangelical Lutheran Church Scholarship Fund  
 Tyler County High School Athletic Boosters  
 Association Scholarship Fund  
 Upper Ohio Valley Italian Foundation  
 Scholarship Fund

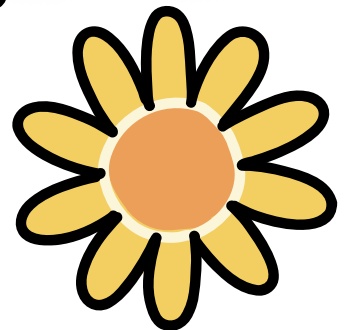
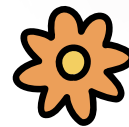
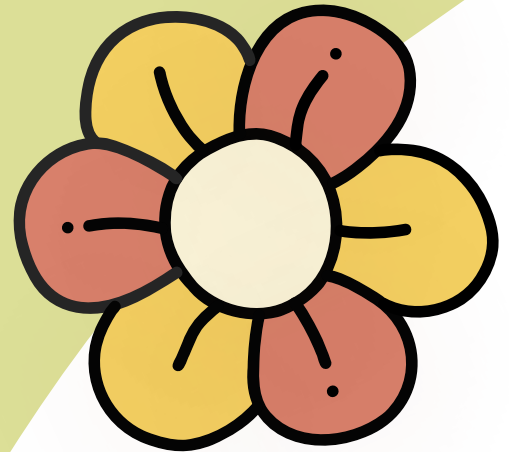
## Agency Funds

Set up by nonprofits to serve as their endowment or as an investment vehicle for reserve funds and other income on the path toward an endowment.

Anthony N. Pirraglia Jr. Legacy Fund  
 Captina Conservancy Endowment Fund\*  
 CASA for Children Endowment Fund\*  
 Children's Museum of the Ohio Valley Endowment Fund  
 Cockayne Farmstead Endowment Fund\*  
 Dr. John & Rosalind Mattox Underground Railroad  
 Museum Endowment Fund \*  
 Edgar Hooper Memorial Endowment Fund  
 Elizabeth A. Kyle Fund  
 Family Service Upper Ohio Valley Endowment Fund\*  
 Grand Vue Park Foundation Fund  
 Jefferson County United Way Fund  
 King's Daughters Endowment Fund\*  
 Lesley W. Galinski Endowment for Music and  
 Fine Arts Fund  
 Millsop Community Center Legacy Trust Fund  
 Mountain Heart Fund  
 NAMI Greater Wheeling Endowment Fund\*  
 Ohio Valley Health Center Endowment Fund\*  
 Sistersville Ferry Endowment Fund\*  
 Tyler County Public Library Fund  
 United Way Endowment Fund  
 Upper Ohio Valley Sexual Assault Help  
 Center Endowment Fund\*  
 Wheeling Health Right Weidle Memorial Fund  
 YMCA of Wheeling Endowment Fund  
 Youth Services System Futures Fund  
 YWCA Domestic Violence Service Fund  
 YWCA Wheeling Endowment Fund\*

## Special Projects Funds

Agudas Achim Congregation Cemetery Fund  
 Beatty Park Fund of Jefferson County  
 Capitol Theatre Preservation Fund  
 City of Steubenville Parks & Recreation Fund  
 City of Wheeling Special Purposes Fund  
 Dean Martin Statue Fund\*  
 Early Literacy for Belmont County Fund  
 Friendship Park of Jefferson County Fund  
 Jefferson County Trails & Greenways Fund  
 Perkins Field Committee Fund  
 Shadyside Turf Project Fund  
 Weirton Independence Day Concert Fund  
 Wheeling 250 Commemorative Video Fund  
 Wheeling Dog Park Fund  
 Wheeling Doughboy Statue Restoration Fund  
 Wheeling National Heritage Area Fund





# Christine Hargrave

Christine's journey with philanthropy began alongside her late husband, Bob, whose contributions to the Community Foundation of Jefferson County (CFJC) laid the groundwork for what would later become a vital part of the Foundation. Her reflection, "Bob would never have described himself as charitable, but he was," encapsulates their humble yet impactful approach to giving.

Christine's philanthropic spirit is deeply rooted in her family values, inspired by the lessons of generosity imparted by her mother. This foundation of faith and giving has been a guiding force in her life. "My mom said that whenever finances looked particularly bleak, she would always – and I underscore always – write an extra check to our church," Christine recalls. This belief in the power of giving, even in times of scarcity, resonates with the ethos of CFOV, where every contribution is seen as a contribution to future growth and community development.

The merger in 2012 stands as a significant milestone in Christine's philanthropic journey. As a board member of both organizations, she played a critical role in this transition. Reflecting on this, Christine says, "Though the CFJC was fledgling throughout its independent existence, your (Susie Nelson, CFOV Executive Director) involvement and ultimate encouragement to bring us into the fold of the CFOV, allowed Bob and me to feel success and longevity

in our adventure into philanthropy and charitable giving." This merger signified a convergence of shared aspirations aimed at enhancing the community.

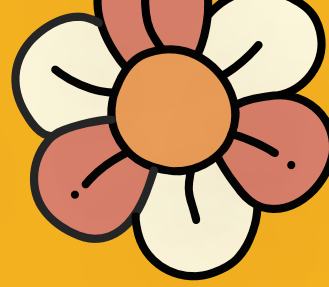
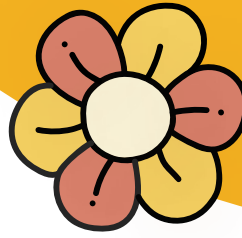
Christine's hopes for the Foundation's future are rooted in education and the perpetuation of philanthropy. She envisions the Foundation as a continuing tool for community engagement, where the spirit of giving is nurtured and flourishes. "I am hopeful that... its value as a community tool for individuals to understand and participate in philanthropy will be felt, understood and utilized by more and more people," she expresses. This vision aligns with the CFOV's commitment to empower individuals to contribute meaningfully to their community.

**As we commemorate the 50th anniversary of CFOV, Christine Hargrave's story stands as a testament to the enduring impact of individual generosity and community collaboration.**

Her legacies, through the Cattrell Family Fund and the Robert C. Hargrave Memorial Fund, continue to impact. Christine's story is a powerful reminder that philanthropy, at its core, is about people coming together to make a difference – a principle that CFOV proudly upholds.



# Fund Gifts



## **An Answered Prayer Fund**

Phil and Tammy Smith

## **Belmont County Endowment Fund**

MPR Supply Chain Solutions

## **Belmont County Enrichment Fund**

Anonymous Donor  
Janice Bundy-Copley  
Cain Family LLC  
Larry Cain  
Carol Carpenter  
Jerry and Lova Ebbert  
EQT Foundation  
Sharon Green  
T.J. and Tammy Jefferis  
David Jones CAI Auctioneer  
Kim Kuthy  
Henry and Grace Niemiec  
Quality Enviromental Services, Inc.  
Theresa and Robert Reese  
Toby and Aileen Rice  
Darrell Rubel \*  
Neil Rubel  
Mary Ruminski  
Sheryl Schaner  
Glynis Valenti  
William and Ruth Watkins  
William Knox, CPA, Inc.

*\* In memory of Elda Rubel*

## **Boots Jarvis Memorial Fund**

Jarvis Williams Funeral Homes, Inc. \*

*\* In Honor of Kay Blair*

*\* In memory of Laura Williams*

*\* In memory of Mabel Zeno*

*\* In memory of Minnie Jarvis*

*\* In memory of Goldie Poole*

## **Bridgeport Educational Assistance Foundation**

Affinity Creative Group/kabookaboo \*  
Robert Alvarado \*  
AMI Wines \*  
Dickenson Peatman & Fogarty \*  
James Ford & Family \*  
John Ford \*  
Jeffrey and Vickie Grandstaff \*  
Lee Hanson \*  
InterContinental The Clement Monterey \*  
Charles J. Kaiser, Jr. \*  
Marcia & Gordy Kanofsky \*  
William and Mary Koss \*  
David Lawson \*  
Robert Lowe \*  
McBride Sisters Wine Company \*  
Mohr-Fry Ranches \*

Craig Natvig \*  
Scudder Roofing Company \*  
Ryan and Jordan Sengewalt  
St. Supery, Inc. \*  
Roger and Marlene Stewart \*  
Daniel Teree \*  
Helen Teree \*  
Mike and Lauren Thomsen \*  
USI Insurance Services \*  
Vino del Sol \*  
Wine Market Council \*  
Yang Yang \*  
Zepponi & Company \*

*\* In memory of Al Scheid*

## **C. Tim Meighen Memorial Fund**

Nancy Greenwood  
John and Susan Raymond

## **Capitol Theatre Preservation Trust Fund**

Lions Club of Warwood

## **Captina Conservancy Endowment Fund**

Captina Conservancy

## **CASA For Children Endowment Fund**

CASA for Children, Inc.

## **CFOV Operating**

City of Wheeling  
Claude Worthington Benedum Foundation  
Elizabeth Stifel Kline Foundation  
Elizabeth Stifel Kline Fund for the CFOV  
Francis J. & Edith Jackson Family Foundation  
Christine Hargrave  
Wheeling Board of Realtors, Inc.  
William H. Homan Founders Fund

## **City of Wheeling Special Purposes Fund**

AJR Holdings, LLC  
Anonymous Donor  
Hess Family Foundation  
Mecklenburg Roofing & Sheet Metal  
Co WV LLC  
Mecklenburg Roofing, Inc.  
MRI Construction Services, Inc.  
MRI Roofing Services, LLC

## **Cockayne Farmstead Endowment Fund**

Eric Anderson  
Marshall County Historical Society, Inc.

## **Community Impact Fund**

Esther Bond  
Dorette Boylan  
Margaret Brennan  
Steve Burke  
Carenbauer Distributing Corporation

Jonathan Dargusch  
Edward D. Gompers & Company, AC  
Karen Ellis  
Sue Seibert Farnsworth  
Diane Fredericks  
James Frey and Michael Hires  
Hydie and Ed Friend  
Joseph and Carolyn Glaub  
Christine Hargrave  
Deborah Hassig  
Eric and Carol Henderson  
Susan and Adrian Hershey  
John Holloway  
W. Peter Holloway, Jr.  
International Brotherhood of Electrical  
Workers Local Union No. 141  
Frank A. Jackson  
Robert and Susan Jankowski  
Patricia Jeffers  
H. Lawrence Jones, Ed.D.  
Karras Painting LLC  
Edwin Kluth  
Joseph Laker  
Roslyn Lando  
Mark Lewis  
John and Sandra Marshall  
John McCullough  
Marlene Midget  
Kristine and Doug Molnar  
James and Lorna Murphy  
Susie and Doug Nelson  
William Paras  
David Robertson  
Dean and Mary Rohrig  
Ruiz Insurance Company  
Clyde Seabright  
Security National Trust Company  
Simon's Market  
David and Patsy Skiviat  
Bernadette Smith  
Debbie Stanton  
Steel Valley Charities  
The Walter Goga Fund \*  
Krishna Raj and Purnima Urval  
Weldon Williams  
John Willits  
XTO Energy Inc.  
Mary Beth and William Yaeger  
Peter and Deborah Yochum

*\* In memory of Walter Goga*

## **Community Leader Internship Program**

Claude Worthington Benedum Foundation  
Elizabeth S. Hess-Gebhard Fund  
Fidelity Charitable  
Fuhrmesiter Family \*  
Alan and Marsha Groover  
Kim and Holly McCluskey

Paul Reeder  
Regional Economic Development Authority  
Sands Charitable Trust  
SWN Production Company LLC  
The Health Plan  
The Schenk Charitable Trust  
WesBanco Bank, Inc.  
XTO Energy Inc.

*\* In memory of Al Scheid*

**Connie and Marvin LeGrande Memorial Scholarship Fund**

Delores G. Cook \*  
Estate of Constance LeGrande \*  
Dollye LeGrande \*  
David and Kimberly McKluskey \*

*\* In memory of Connie LeGrande*

**Courtney & Danielle Block Memorial Scholarship Fund Sponsored by UPS**  
Frontstream SPV LLC

**David & Mary McKinley Fund**

Anonymous Donor  
David and Mary McKinley

**David Robertson Scholarship Fund**

David Robertson

**Dean Martin Statue Fund**

Old Fort Steuben Project, Inc.  
Royce R Syracuse, MD \*

*\* In memory of the Syracuse Family*

**Donivon E. Adams Memorial Scholarship Fund**

Estate of Donivon E. Adams

**Douglas Naylor First Family Legacy Fund**

Barium & Chemicals, Inc. \*

*\* In memory of Eleanor and Douglas Naylor*

**Dr. John and Rosalind Mattox Underground Railroad Museum Endowment Fund**

William and Veronica Nutting  
Underground Railroad Museum Inc.

**Early Literacy for Belmont County Fund**

Belmont Savings Bank  
CARE Funeral & Cremation Specialists  
East Central Ohio Educational Service Center  
Kristina Estle  
Goodman Group  
Junior Women's Club  
Theresa and Robert Reese  
Debbie Stanton  
The Cafaro Foundation  
Kenneth R. Dennis Field of Interest Fund  
United Dairy, Inc.  
West Texas Roadhouse

**Edward and Marisa Nolan Family Fund**

Adam Maestle \*  
Raymond and Patricia Nepa \*

Daniel Nolan and Blake Galler \*  
Janet Nolan \*  
REStyle Consignment, LLC \*  
Damien Stahl \*  
Mary Kay Stahl \*  
Eva Marie Stahl \*  
UBS Matching Gifts Program \*

*\* In memory of Marisa Stahl Nolan*

**Elikan Community Fund**

Ethel Claire Elikan Charitable Remainder  
Annuity Trust

**FACTS Impact Fund**

Action Gaming Inc. - David Shriver  
Barry Allen  
Lawrence Bandi  
Greg Bauer  
John Billie  
Christopher Bucon  
Thomas F. Burgoyne ^  
David Croft  
Jacob Dailer  
Daniel Doyle, EdD  
Sean Doyle  
Hank Drews  
Joseph Eddy  
Michael Ferns  
Gary Glessner  
Gumby's LLC - John Prather  
W. Peter Holloway, Jr.  
Eriks Janelins  
Mark Peluchette  
Patrick McDermott  
David McKinley  
David Miller  
Thomas Paree  
Robert Sincavich  
Joe Steger  
Chad Thalman  
Robert Wetzol

*^ Deceased*

**Family Service - Upper Ohio Valley Endowment Fund**

Family Service Upper Ohio Valley

**First Presbyterian Church of Wellsburg Fund**

First Presbyterian Church of Wellsburg

**Frank Ferguson Memorial Scholarship Fund**

Charles Bond \*  
Esther Bond \*  
Peggy Ferguson \*  
Phyllis and Charles Kellam \*  
Alaire Knox \*  
Oh-Dello Dairy Farm \*  
Rebecca Padden \*  
Mary Ann and Michael Rafa \*  
Joseph and Janet Spangler \*  
Olive and Jeffrey Turner \*

*\* In memory of Frank Ferguson*

**Gilbert S. Bachmann Memorial Fund**

Wheeling Automobile Club Fund

**Give Wetzel County Fund**

EQT Foundation  
Toby and Aileen Rice

**Goodman Family Fund**

Jay Goodman III  
Mary Lou Goodman

**Governor Boreman Statue Fund**

Jeanne Carter  
Chris Hess Foundation  
Ben and Lynne Exley  
Hess Family Foundation  
Main Street Bank  
Ohio County Commission  
Barbara and Martin Pirhalla  
State of West Virginia  
William Walker

**H. Lawrence Jones Fund**

Kiwanis Club of Wheeling

**Helen T. Arkwright Fund**

William & Jean Carson Charitable  
Remainder Unitrust

**Hieronimus Family Fund**

C. Kieth and Terri Hieronimus

**IAFF Local #12 Scholarship Fund**

Nadine M. Tripodi \*

*\* In memory of Tim Taylor*

**Irene Meagel Fund**

Irene Meagel Charitable Trust

**James McCune Foundation Fund**

John and Ruth McCune \*  
Timothy and Lisa McCune  
Starvaggi Charities, Inc.

*\* In memory of James and Barbara McCune*

**Jan Mayhew Graham Scholarship Fund**

Troy Graham

**Janie Altmeyer Think Pink Fund**

Altmeyer Funeral Homes  
Bleifus Tire Service, Inc.  
Bordas and Bordas Attorneys, PLLC  
Barbara and Jeff Cefus  
Chris Hess Foundation  
Thea Gompers  
Cynthia Greenlee  
Gumby's LLC  
Rosemarie Hardin, MD  
Mark Hofbauer  
Dr. Robert and Cheryl Joseph  
Kepner Funeral Homes  
Mariann and Charles Kubic  
La Carezza De Cielo  
Laura Mull Insurance and Financial  
Services Inc  
LDT Dance Centre LLC



Main Street Bank  
 Vishakha Maskey  
 Brenda Matzke  
 Patrick & Kathleen McDermott  
 McKinley Carter Wealth Services  
 Ohio County Medical Society Alliance  
 Paree Insurance Centers  
 Paull Associates  
 Radiology Associates, Inc. Wheeling Hospital  
 Rohrig Heavy Maintenance LLC  
 Emily Goodman Shortall  
 Erik Shuster  
 Charles and Lori Spadafore  
 Kevin Stingle  
 Tecnocap, LLC  
 The Health Plan  
 Touchstone Research Lab  
 Wheeling Volkswagen Subaru  
 WVU Medicine  
 Zelek Consulting Services LLC

#### **Jerome B. Schmitt Scholarship Fund**

Lanny Sacco  
 Jeb and Alyssa Schmitt  
 Wheeling Automobile Club Fund

#### **John Marshall High School Scholarship Fund**

Carlas and Richele Anderson  
 Kylee and Cameron Benson  
 Glenn and Kari Kim Clark  
 Cochrane Moneske O'Brien Charitable Fund  
 Catherine Folmar  
 Brenda and Clement Frohnappfel  
 David Gaudino  
 Jonette Holmes  
 Kathleen and Zachary Loughman  
 Messino-Wehrheim Fund  
 Cara Owens  
 Megan Pintus  
 Dominique and Keith Riggie  
 David and Marcie Robbins  
 Anna Stipetich  
 The Marshall County Educational Foundation Inc.  
 Carla Whitlatch  
 Jennifer and George Yates

#### **John Nicholas Varlas & Nancy Allen Varlas Scholarship Fund**

John Varlas

#### **Joseph Krivak Memorial Fund**

Lee Becker Family  
 Agnes Connors  
 Davis Family  
 Dr. Kelli Fournier  
 Thomas and Maria Hermanowski  
 Richard Mahoney  
 Dave and Allison Paolisso  
 Paul and Mary Paolisso  
 David Tate

#### **Joy Cox Nursing Memorial Scholarship Fund**

Charles and Christine Hood

#### **Kaiser Family Fund**

Charles J. Kaiser, Jr.

#### **King's Daughters Endowment Fund**

King's Daughters Child Care Center

#### **Laughlin Chapel Endowment**

John Hazlett

#### **Lawrence E. Bandi Fund**

Lawrence Bandi

#### **Lee Ann Foundation for Victims of Breast Cancer**

Lawrence Gress  
 Shortline Friends & Neighbors

#### **Leon Berze Memorial Scholarship**

Charlotte Berze

#### **Mark Eddie Rockin' Juvenile Diabetes Fund**

CAL Diggs, Inc  
 Steven Henderson  
 Jose Valle and Daisy Gaitan-Valle

#### **Marshall County Society for Disabled Children & Adults Fund**

Bonnie Anderson \*

*\* In memory of Donald Haskins*

#### **Mary's Provisions for the Poor Fund**

Robert Miller

#### **Matt Velez Save A Life Fund**

Thomas and Diane McCulloch

#### **McKinley Carter Cares**

Nicole Gabriel  
 Monica Garver  
 Brian Gongaware  
 McKinley Carter Wealth Services  
 David Nolan  
 Thomas Parker  
 Teresa Shawver  
 John Slicer

#### **Messino-Wehrheim Fund**

Marilyn M. Wehrheim \*

*\* In memory of Marie Messino-Wehrheim*

#### **Mey Family Fund**

Diana and Mark Mey

#### **Mike G. Dotson Scholarship Fund**

Dale Koontz

#### **Nolte Animal Fund**

Charles I Nolte Charitable Lead Unitrust

#### **Ohio County Bar Association Scholarship Fund**

Jarod and Miriam Douglas  
 Herndon, Morton, Herndon & Yaeger  
 Frank A. Jackson  
 John & Werner Law Offices, PLLC

Kahle Law Office  
 Law Office of Gail W. Kahle  
 McCoid Law Offices PLLC  
 Ohio County Bar Association  
 Roberta and Michael Olejasz  
 Christopher Prezioso  
 Robyn Ruttenberg  
 Stephen Snyder and Denise Knouse-Snyder

#### **Ohio Valley Health Center Endowment Fund**

Ohio Valley Health Center

#### **Ohio Valley Jaycees Charitable Fund**

Ohio Valley Jaycees

#### **Pangilinan-Torres Charity Fund**

Nelly Pangilinan

#### **Patrick A. Clutter Scholarship & Memorial Fund**

Josh Braunlich and HB&W Inc.  
 Pat Clutter Scholarship Golf Scramble

#### **Pauline Barnes Fund**

Estate of Pauline C. Barnes

#### **Phil Lewton Memorial Sportsmanship Fund**

Estate of Frederick Lewton

#### **Pine Grove Library Fund**

Jarvis Williams Funeral Homes, Inc.

#### **Racam Agriculture Education Fund**

Roy and Carol Ann Meredith

#### **Robert C. Hargrave Memorial Fund**

Teri and Roger Adams \*  
 Suzanne and Thomas Brown \*  
 Christine Hargrave \*

*\* In memory of Robert Hargrave*

#### **Robert W. Schramm West Liberty State College Science Fair Fund**

Erik Schramm, Sr.

#### **Roslyn & Charles Lando Fund**

Roslyn Lando

#### **Shadyside Turf Project Fund**

Shadyside Varsity Softball  
 Sons of the American Legion Squadron #521

#### **Sistersville Ferry Endowment Fund**

City of Sistersville  
 Jarvis Williams Funeral Homes, Inc.  
 The Sheriff of Wetzel County

#### **Southwestern Energy**

SWN Production Company LLC

#### **St. Clairsville Public Library Foundation Fund**

Frank and Ann Antenucci \*  
 Linda Dowler  
 John and Rita Dutton \*

Mr. & Mrs. Ron Fletcher \*  
 Michelle and Kurt Gabram \*  
 John Gorsuch \*  
 Anne and Murray Holmes \*\*  
 Craig and Charlotte Karges \*  
 Susan & Wayne Lapham \*  
 Mark and Terri Macri \*  
 Becky A Michael \*  
 Tom and Diana Olszowy \*  
 John and Karin Ren \*  
 TJ & Audra Scalfaro \*  
 J.D. and Martha Shippy \*  
 John and Charlotte Slavik \*  
 Rose and Victor Snyder \*  
 St. Clairsville Library Foundation \*  
 Watkins Utica Fund

*\* In memory of John P. Feisley*  
*\*\* In honor of the Feisley Family*

**St. John the Divine Living Memorial Endowment Fund**  
 Constantine and Marie Kayafas

**St. Matthew's Lutheran Church Fund**  
 St. Matthew Lutheran Church

**St. Matthew's Lutheran Church Scholarship Fund**  
 St. Matthew Lutheran Church

**Stan Sobel Memorial Fund**  
 Starr Korner-Duvall \*

*\* In memory of Stan Sobel*

**Susie Fadoul Memorial Fund**  
 David Baldree \*  
 Enchanted Travel Destinations by Lindsay \*  
 Millet Fadoul \*  
 Bill & Emily Fisher \*  
 Fraternal Order of the Eagles  
 Elm Grove # 1891 \*  
 William and Mary Gavin \*  
 Vera Howard \*  
 Claire Jesso \*  
 Kristen Link \*  
 Lions Club of Elm Grove \*  
 Middle Creek Elementary School \*  
 Murad Heating & Air \*  
 Dr. and Mrs. Richard Oberlander \*  
 Pennybacker's Lawn Service, LLC \*  
 Jake Puglisi \*  
 Jenny Snyder \*  
 The Home Squad \*

*\* In memory of Susie Fadoul*

**Thieroff Family Fund**  
 Sue Blevins \*  
 H. Lawrence Jones, Ed.D. \*

*\* In memory of George Thieroff*

**United Way Endowment Fund**  
 Charles I Nolte Charitable Lead Unitrust

**Upper Ohio Valley Sexual Assault Help Center Endowment Fund**  
 Upper Ohio Valley Sexual Assault Help Center Inc.

**Urban Youth Work Endowment**  
 John Hazlett

**Veterans Fund**  
 Fraternal Order of Eagles Ladies Auxiliary #1891  
 Gail and John Looney

**Weirton Independence Day Concert Fund**  
 Charles M. & Thelma M. Pugliese  
 Charitable Foundation

**Wetzel County Area Fund**  
 J.C. Mensore Distributor Inc.

**Wheeling 250 Commemorative Video Fund**  
 George Cosmides  
 James Frey and Michael Hires  
 Donna Glass  
 John Hazlett  
 Wilbur Jones, Jr.  
 Paul and Deborah McKay  
 Hon. Frederick Stamp, Jr.

**Women's Giving Circle**  
 Sue Abraham *m*  
 Carole Adams *m*  
 Lisa Allen *m*  
 Helen Altmeyer *m*  
 Anonymous Donor *m*  
 Missy Ashmore *m*  
 Jo Anne Bala *m*  
 Sue Blevins *m*  
 Carah Blount *m*  
 Barbara Bonenberger *m*  
 Lynn Buch *m*  
 Roanne Burech *m*  
 Sharon Byrd *m*  
 Christine Carder *m*  
 Margie Carr *m*  
 Maryann Cater, DO *m*  
 Paula Clossin *m*  
 Lynn Comerchi *m*  
 Rita Companion *m*  
 Sally Cunningham *m*  
 Karen DiOrio *m*  
 Margaret Dolan *m*  
 Michelle Dougherty *m*  
 Sherrie Dunlevy *m*  
 Heather Eddy *m*  
 Martha Eddy *m*  
 Cassandra Elliott *m*  
 Dixie Ellwood *m*  
 Lynne Exley *m*  
 CJ Farnsworth *m*  
 Sue Seibert Farnsworth *m*  
 Kathy Finsley *m*  
 Jeanne Finstein *m*  
 Hydie Friend *m*  
 Suzanne Rohrig Gaiser *m*  
 Ellen Gano *m*  
 Linda Gardill *m*

Jody Geese *m*  
 Michael Gianni  
 Donna Glass *m*  
 Jay Goodman III  
 Mary Lou Goodman *m*  
 Antoinette Greyer *m*  
 Bonnie Grisell *m*  
 Christine Hargrave *m*  
 Erica Harley *m*  
 Dorothy Harman *m*  
 Deborah Hassig *m*  
 Sara Hauptfuehrer *m*  
 Sherry Hearne *m*  
 Marty Hobbs *m*  
 Elizabeth Hofreuter *m*  
 Susan Hogan *m*  
 Mary Beth Hughes *m*  
 Jasmin Russel Ilover *m*  
 Lisa Indermuhle *m*  
 Ronne-Renee Jackson *m*  
 Joyce Jefferson *m*  
 Joan Joanou *m* ^  
 Cheryl Jones *m*  
 Debbie Joseph *m*  
 Sharon Joseph *m*  
 Deborah Kaiser *m*  
 Karen Kangisser *m*  
 Charl Kappel *m*  
 Dea Kennen *m*  
 John Kepner \*  
 Adrienne Klouse *m*  
 Roslyn Lando *m*  
 Leslie Liedel *m*  
 Gail Looney *m*  
 Terry Magro *m*  
 Candace McCarthy *m*  
 Paula McClure *m*  
 Danielle Cross McCracken *m*  
 Kathleen McDermott *m*  
 Laurie McDermott *m*  
 Maureen McNabb *m*  
 Tulane Mensore *m*  
 Teresa Michaels *m*  
 Kris Molnar *m*  
 Joelle Moray *m*  
 Susie Nelson *m*  
 Snookie Nutting *m*  
 Lisa Olson *m*  
 Claire Paxton *m*  
 Jennifer Peckenpaugh *m*  
 Vicki Pennybacker *m*  
 Holly Planinsic *m*  
 Mia Porter *m*  
 Shari Potter *m*  
 Jeanie Prince *m*  
 Karen Recht *m*  
 Susan Regrut *m*  
 Jamie Remp *m*  
 Elsie Reyes *m*  
 Lea Ridenhour *m*  
 Don Riggensbach  
 Cheryl Riley *m*  
 Sally Riley *m*  
 Anne Robinson *m*  
 Cathy Rohrig *m*  
 Erika Rohrig *m*  
 Mary Rohrig *m*

Jeanne Sacco *m*  
Lanny Sacco \*\*  
Wendy Scatterday *m*  
Hon. James E. Seibert  
Deanna Shibben *m*  
Emily Shortall *m*  
Paula Sikora *m*  
Bernadette Smith *m*  
Debra Smith *m*  
Lori Spadafore *m*  
Elizabeth Stamp *m*  
Joan Stamp *m*  
Joanne Sullivan *m*  
DeAnna Taylor *m*  
Rosana Thomas  
Melinda Thompson *m*  
Leigh Trischler *m*  
Margaret Warren *m*  
Shirley Weaver *m*  
Carrie White *m*  
Nicole Whorton *m*  
Jody Williams *m*  
Weldon Williams  
Rebecca Wilmoth *m*  
Betty Worls *m*  
Nancy Wright *m*  
Mary Beth Yaeger *m*  
Youth Services System, Inc.

\* *In memory of Joan B. Kepner m*

\*\* *In memory of Carole Sacco*

^ *Deceased*

*m* - *Member*

**YWCA Wheeling Endowment Fund**

Young Women's Christian Association  
of Wheeling, WV

**Youth Services System**

**Futures Fund**

Youth Services System, Inc.





# Dr. Larry Jones

His involvement with CFOV illustrates his deep commitment to meaningful charitable work. Dr. Jones, reflecting on his philanthropic journey, shares, "The hardest check to write is the first one. After that, it becomes second nature."

Dr. Jones's connection with CFOV began through an important meeting with one of its founders, Bill Hohman. This led to the creation of the H.L. Jones Fund in 1997, supporting critical organizations such as the Wheeling YMCA, the United Way, and the Ohio County Schools Foundation. Dr. Jones underscores the need for purposeful giving, stating, "I was taught that there was a responsibility in giving to ensure that the money went for services to those who needed it."

Championing the notion that everyone can engage in philanthropy, Dr. Jones has redefined what it means to be a philanthropist in our community. He believes in transforming immediate giving into long-lasting support. He explains this approach by saying, "A good philanthropist is one who turns their current giving passion into forever giving to that passion."

Dr. Jones's tenure as a former Superintendent of Ohio County Schools and as a member of the CFOV's Board of Directors demonstrates his unwavering dedication to



the welfare of the community. His involvement has been characterized by a heartfelt commitment to addressing community needs and nurturing long-term philanthropic goals.

**In this significant year for CFOV, Dr. Jones' contributions stand as an example of the power of personal dedication to philanthropy.**

His commitment to transforming today's generosity into tomorrow's legacy has been a guiding principle of his association with the foundation. Dr. Jones captures the essence of his philanthropic philosophy by stating, "By establishing a fund at the Foundation, you have the opportunity to do the research about where you want your giving dollar to go and then have the best cost-effective way to give without having to spend time managing the money." His legacy continues to inspire and guide the CFOV and the Ohio Valley community towards a brighter, more charitable future.



# Scholarship Recipients

## **Aaron Davies Memorial Scholarship**

Anthony Cross, Weir High School

## **AAUW Beulah Boyd Scholarship**

Ateria Walker, West Virginia University  
Heather Mehlman, West Liberty University  
Jenna Howard, West Liberty University  
Joseph Carter, Hofstra University  
Laruen Garan, Marietta College  
Lindsey Garrison, Bethany College  
Macy Malin, Walsh University  
Maria Vincenzo, Ohio University Eastern  
Megan Ayala, West Liberty University  
Rachel Kazmirski, Marietta College  
Vincent Patrone, Kent State University

## **Barnesville High School Class Of 1979 Scholarship For Academic Excellence**

Calista Crick, Barnesville High School  
Ethan Leach, Barnesville High School

## **Beulah Meyer Scholarship**

Nathan Elias, Weirton Madonna High School  
Samantha Swidowski, Weir High School

## **Bradley A. Miller Jr. Memorial Scholarship**

Alyssa McLaughlin, John Marshall High School

## **Carl Rollynn "Pop" & Grace B. Sullivan Scholarship**

Alyvia Pittman, Ritchie County High School  
Olivia Cress, Ritchie County High School

## **David Robertson Scholarship**

Phoebe Molish, Oak Glen High School

## **Deever Family Scholarship**

Amelia Woollard, St. Clairsville High School  
Terrence Sacco, St. Clairsville High School

## **Donivon E. Adams Memorial Scholarship**

Jamie Daugherty, Tyler Consolidated High School

## **Dr. Jim Mills Memorial Scholarship**

Emily Phillips, Edison Local High School  
Malena Biasi, Steubenville High School

## **Edwin "Bud" Weigle Memorial Trade School Scholarship**

Clinton Conrad, Tyler Consolidated High School

## **Frances S. & Stephen E. Pritchard Scholarship**

Makenzie Hakes, Tyler Consolidated High School

## **Frank Ferguson Memorial Scholarship**

Alexis Cipoletti, Brooke High School

## **Fraternal Order of Police Association Scholarship**

Annalynn McCreary, Wheeling Park High School  
Morgan Howard, Central Catholic High School

## **Friends Of MPLX Gathering & Processing Scholarship**

Colton Lyons, Cameron High School  
Tessa Sleeth, Doddridge County High School

## **Gene Deprosperis Scholarship**

Benjamin Foster, Central Catholic High School

## **George Zatezalo Memorial Scholarship**

Tyler Kelly, Weir High School

## **Glenda K Follett Memorial Scholarship**

Mckensie Haught, Valley High School

## **Helen Biery Memorial Scholarship**

Nathan Shelek, Wheeling Park High School  
Sara Gruber, Central Catholic High School  
Savannah Turner-Davis, Wheeling Park High School

## **Howard Corcoran Memorial Scholarship**

Breanna Herrick, Magnolia High School

## **Jack And Charolette Nelson Scholarship**

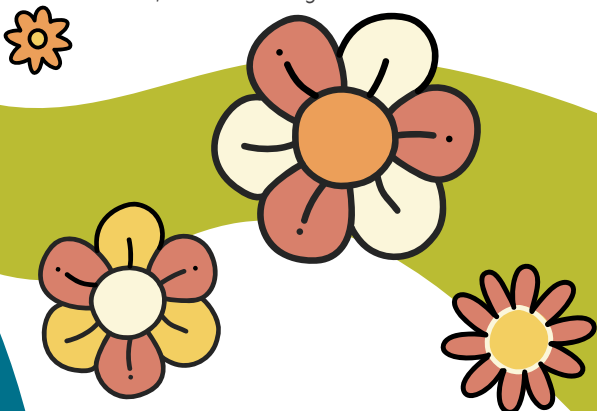
Aliyah Pelley, Wheeling Park High School

## **Jack And Mary Burgbacher Carpenter Scholarship**

Briann Templeton, Tyler Consolidated High School  
Justin Fluharty, Tyler Consolidated High School

## **James E. & Betty L. Kinsey Memorial Scholarship**

Aaliyah Otto, Cameron High School  
Amber Yoho, Cameron High School  
Arielle Yost, Cameron High School  
Carlie Oneil, Cameron High School  
Clayton Bryan, Cameron High School  
Colton Lyons, Cameron High School  
Kiara Whipkey, Cameron High School  
Nathan Haeberle, Cameron High School  
Trevor Beresford, Cameron High School  
Welder Williams, Cameron High School



**Jan Mayhew Graham Scholarship**

Katie Zoellers, Oak Glen High School  
 Kennedy Mcgeehan, Oak Glen High School  
 Madison Mckay, Oak Glen High School  
 Phoebe Molish, Oak Glen High School

**Jerome B. Schmitt Scholarship**

Ryan Zumpano, Shadyside High School

**John & Becky Wright 1st Generation Scholarship**

Victoria Yost, Tyler Consolidated High School

**John & Norma Miller-Daffin Educators' Scholarship**

Helen Koucoumaris, Ohio University  
 Shayla Schuster, Ohio University

**John H. & Dorothy M. Zmavec Scholarship**

Breanna Herrick, Magnolia High School  
 Tyler West, John Marshall High School

**John J. & Tulane B. Mensore Scholarship**

Trevor Williamson, Magnolia High School

**John M. And Wanda D. Brown Scholarship**

Annalynn McCreary, Wheeling Park High School

**John Nicholas Varlas And Nancy Allen Varlas Scholarship**

Benjamin Mccardle John Marshall High School

**John Racer Scholarship Fund**

Briann Templeton, Tyler Consolidated High School

**Joseph M. & Annale R. Wells Scholarship**

Breanna Herrick, Magnolia High School

**Joseph P. Mull & Virginia P. Mull Scholarship**

Brenna Planey, St. Clairsville High School  
 Kaelyn Brokaw, Belmont Career Center

**Joy Cox Nursing Memorial Scholarship**

Savannah Turner-Davis, Wheeling Park High School

**Kathleen Simmons Batalion Memorial Scholarship**

Shauna Riggs, Tyler Consolidated High School

**Kenneth R. Dennis Scholarship**

Brenna Planey, St. Clairsville High School  
 Chloe Meeker, Martins Ferry High School  
 Emily Binger, St. Clairsville High School  
 Ethan Leach, Barnesville High School  
 John Koyder, Union Local High School  
 Kayla Nowakowski, Bridgeport High School  
 Trent Lewis, Martins Ferry High School

**Leon Berze Memorial Scholarship**

Jacob Phillis, Buckeye Local High School

**Leora And Mildred Larue Memorial Scholarship**

Emma Bishop, Preston High School  
 Haley Hart, Preston High School  
 Harleyrae Rogers, Preston High School

**Lisa Cockayne JMHS Scholarship**

Audrey Mccord, John Marshall High School

**Lloyd Shirl & Esta Mae Taggart Scholarship**

Edwin Probst, Tyler Consolidated High School

**May Green Scholarship**

Chloe Meeker, Martins Ferry High School

**Mulholland Futures Scholarship**

Alexis Cipoletti, Brooke High School

**N. Elizabeth Elbin Memorial Scholarship**

Abbigale Carney, Cameron High School  
 Arielle Yost, Cameron High School  
 Chloe Yocum, Cameron High School  
 Montgomery Bertram, Cameron High School

**Ohio County Bar Association Scholarship**

Aliyah Pelley, Wheeling Park High School  
 Kaden Cunningham, Wheeling Park High School  
 Noah Blair, Central Catholic High School

**Orrick, Herrington & Sutcliffe GOC Scholarship**

Kaden Cunningham, Wheeling Park High School  
 Noah Blair, Central Catholic High School

**Pat Johnson Memorial Scholarship**

Andrew Tiu, Central Catholic High School

**Patrick A. Clutter Memorial Scholarship**

Jenna Maguire, Wheeling Park High School  
 Lauren Taylor, Wheeling Park High School

**Polish American Patriot Club Scholarship**

Alexander Baldauff, Central Catholic High School  
 Aliyah Pelley, Wheeling Park High School  
 Kaden Cunningham, Wheeling Park High School  
 Michael Borsuk, Wheeling Park High School  
 Morgan Miller, John Marshall High School  
 Noah Blair, Central Catholic High School  
 Ryan Jeffries, St. Clairsville High School  
 Towne Moores, Wheeling Park High School

**Ruth & William Gilligan Memorial Scholarship**

Avery Kemp, Tyler Consolidated High School

**St. Matthew's Lutheran Church Scholarship**

Arielle Yost, Cameron High School  
 Charlie Oneil, Cameron High School  
 Lauren Tekely, John Marshall High School  
 Shelby Koontz, John Marshall High School  
 Montgomery Bertram, Cameron High School

**TCHS Athletic Boosters Association Scholarship**

Briann Templeton, Tyler Consolidated High School  
 Garrett Ammons, Tyler Consolidated High School

**The Smaltz Family Scholarship**

Jake Bostaph, Weir High School

**Tikkun Olam Scholarship Of Temple Beth Israel Of Steubenville, Ohio**

Emilee Knorr, Brooke High School  
 Gracie Jackson, Steubenville High School  
 Isabella Marshall, Weir High School

**Trinity Evangelical Church Scholarship**

Kaden Cunningham, Wheeling Park High School



#### **Upper Ohio Valley Italian Heritage Foundation Scholarship**

Alexis Cipoletti, Brooke High School  
Austin Nestor, Central Catholic High School  
Brenna Planey, St. Clairsville High School  
Brianna Ferguson, Brooke High School  
Cora Metz, St. John Central Academy  
Dominic Cipriani, Central Catholic High School  
John O'karma, Steubenville Catholic Central High School  
Kiera O'brien, Steubenville High School  
Morgan Owens, Weirton Madonna High School  
Skylar Crawford, John Marshall High School  
Sofia-Teresa Dibacco, Weirton Madonna High School  
Trixie Calissie, John Marshall High School

#### **W. Thornley Hunt Memorial Scholarship**

Brenna Planey, St. Clairsville High School  
Terrence Sacco, St. Clairsville High School

#### **Bennett Family Scholarship**

Ethan Leach, Barnesville High School  
Macy Snider, Morgantown Christian Academy  
Mia Zopp, Brooke High School  
Ryan Zumpano, Shadyside High School

#### **Wheeling Professional Firefighters IAFF Local 12 Scholarship**

Nathan Shelek, Wheeling Park High School



# Lova Ebbert

As a founding member of the Belmont County Enrichment fund, Lova played a pivotal role in transforming the landscape of community giving in Belmont County. Her journey began with a simple yet profound realization among a group of landowners: "Most of us were farmers... the land was actually our wealth so to speak, and so it was just part of who we were. You wanted to do something for your community." Lova recalls. This insight led to the creation of a fund that has, since 2013, granted nearly \$530,000 to various community organizations.

The grants distributed by the BCEF have been diverse and impactful, reflecting the varied needs of Belmont County. She fondly remembers a grant to a foster care agency as one that touched her heart deeply. "Children who go into foster care a lot of times come with a grocery bag with their belongings," she reflects. The grant provided these children with backpacks filled with personal care items, a toy, and a blanket – small comforts in a difficult time.

Lova's vision extends beyond immediate impact. She is acutely aware of the finite nature of resources like oil and gas and emphasizes the importance of sustainable giving. Her advice to other landowners is rooted in a

long-term perspective: "The difference we make today will impact future generations." This foresight aligns with CFOV's vision of fostering a vibrant region brimming with opportunities, not just for the present but for future residents as well.

**As CFOV celebrates 50 years of service and community betterment, Lova Ebbert stands as a example of the power of collective action.**

Her story is not just about the grants given or the projects funded; it's about a legacy of impact, community, and a deep-seated belief in the potential of the Upper Ohio Valley. Lova and the Belmont County Enrichment Fund embody the spirit of CFOV - turning individual goodwill into a lasting resource for community betterment. As we look back on 50 years, we are reminded that it is individuals like Lova who drive our mission forward, shaping a brighter future for the Ohio Valley.



# Grants & Distributions

## The following grants were made anonymously from Donor Advised Funds

1st Presbyterian Church  
A Special Wish Foundation Ohio Valley Chapter  
Alliance Defending Freedom  
American Red Cross - Ohio River Valley Chapter Wheeling  
Barnesville Hospital Association, Inc  
Belmont County Enrichment Fund  
Belmont Volunteer Fire Department  
Bethesda United Methodist Church  
Bethesda Volunteer Fire Department  
Calvary Presbyterian Church  
Castleman Run United Methodist Church  
Catholic Charities West Virginia  
Compassion International  
Doctors Without Borders  
Heifer International  
Honor Flight, Inc.  
Injured Marine Semper Fi Fund  
Mercy Ships Foundation  
North Wheeling Community Youth Center  
Ohio Valley Christian Soldiers  
Salvation Army - Belmont County  
Samaritan's Purse  
Southeastern Guide Dogs, Inc.  
St. Matthew's House  
Tunnel to Towers Foundation  
Valley Hospice, Inc.  
West Liberty University Foundation  
World Challenge, Inc  
Young Life Ohio Valley

## Aaron Davies Charitable Fund

City of Weirton Board of Park Commissioners  
WVU Foundation Inc

## Advancing Racial Justice in West Virginia Fund

Fairfield Community Development Corporation  
McDowell County Commission on Aging, Inc.  
Men of Change, Inc.  
Mineral County FRN  
Race Matters, Inc.  
Stars That Shine  
Washington Lodge #6, A.F. & A.M. Incorporated  
Young Chapel African Methodist Episcopal Church  
Young Women's Christian Association of Wheeling, WV

## An Answered Prayer Fund

HoH-Share, Inc.

## Andy Hogan Charitable Fund

Temple Shalom

## Bailey Family Fund

Wheeling Symphony Society, Inc.

## Belmont County Enrichment Fund

Belmont County General Health District  
Belmont County Historical Society  
Bethesda Senior Citizens, Inc  
Bridgeport Volunteer Fire and Emergency Department  
Calvary Presbyterian Church  
Faith in Action Caregivers, Inc.  
Ohio University Foundation on behalf of Ohio University Eastern Southeast, Inc.  
Thoburn United Methodist Church-St C Council of Churches Food Pantry  
Tri-County Help Center, Inc.  
Union Local School District  
Wheeling Health Right, Inc.

## Bridgeport Educational Assistance Foundation

Bridgeport Exempted Village School District

## C. Tim Meighen Memorial Fund

Bowman United Methodist Church

## Charles Lando Memorial Fund

Young Women's Christian Association of Wheeling

## David & Mary McKinley Fund

Berrien Community Foundation  
Beta Theta Pi Foundation, Beta Mu Chapter  
St. Matthew's Episcopal Church  
The Oglebay Foundation  
WVU Foundation Inc

## Drs. Madhu and Krishan Aggarwal Family Fund

Ekal Vidyalaya Foundation of USA  
Hindu Swamsevak Sangh  
St. Jude's Children's Research Hospital  
Weirton Christian Center

## Eastern Ohio Dental Society Oral Health Care Fund

Ohio Dental Association Foundation

## Elizabeth S. Hess-Gebhard Fund

Community Leader Internship Program  
Wheeling-Oglebay Tennis Club  
Wheeling Symphony Society, Inc.

## FACTS Impact Fund

HoH-Share, Inc.

## Former Martins Ferry Kiwanis Club Charitable Fund

Martins Ferry High School

## Fred R. & Jessie E. Wilcox Memorial Fund

Middlebourne United Methodist Church

## George Charles Charlie Hughes III Memorial Fund

Bethlehem Alliance Church, Inc.  
Glen Dale B and G Ball  
Moundsville-Marshall County Public Library

## Gompers Fund

West Virginia Catholic Foundation

## Goodman Family Fund

St. Clairsville Area Soccer Association (SCASA)  
The Oglebay Foundation

## Hess Family Fund

Laughlin Memorial Chapel  
Wheeling Housing Authority

## Hieronimus Family Fund

The Vineyard Church

## James McCune Foundation Fund

Central Catholic High School  
Cure HHT  
GCU Foundation  
Madonna High School  
St. Joseph the Worker School  
St. Paul Catholic Grade School

## Janie Altmeyer Think Pink Endowment Fund

Wheeling Hospital WVU Medicine

## Janie Altmeyer Think Pink Fund

Wheeling Hospital WVU Medicine

## Jerry & Lova Ebbert Fund

Belmont County Military Veterans Museum  
Lifewise Academy  
National Trail #348 of Questers, Inc  
Underground Railroad Museum Inc.

## John and Kristina Kramer Charitable Fund

The Oglebay Foundation

## Joseph Krivak Memorial Fund

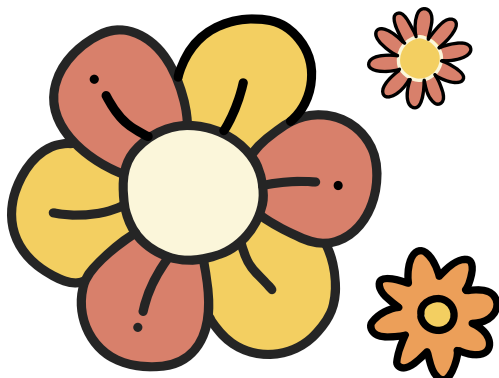
Madonna High School

## Kinsley S. Ard Memorial Fund

Paris Cemetery Company

## Lynne & Ben Exley IV Charitable Fund

King's Daughters Child Care Center  
Linsly School



Northern Illinois University Foundation  
Ohio Valley Recovery, Inc. - The Unity Center  
The Oglebay Foundation  
United Way of the Upper Ohio Valley  
Vance Memorial Presbyterian Church  
West Liberty University Foundation  
West Virginia Wesleyan College  
Wheeling Country Day School  
Wheeling Symphony Society, Inc.

**Marshall County Society for Disabled Children & Adults Fund**

Bowman United Methodist Church  
Hilltop Elementary School  
House of the Carpenter  
Marshall County Friends of Special Athletes  
Marshall County Schools  
Moundsville Lions Club  
Moundsville Middle School  
Ohio Valley Soap Box Derby

**Mary Ann Hess Fund**

Family Service Upper Ohio Valley  
Laughlin Memorial Chapel

**Matt Velez Save A Life Fund**

Central Elementary

**McKinley Carter Cares**

Adventist HealthCare, Inc.  
Brigid's Path, Inc.  
Children's Home Society of West Virginia  
Creative Citizen Studios  
Grace Community Church  
House of the Carpenter  
Kanawha-Charleston Humane Association Inc  
Knead Community Cafe  
Libera Inc  
Northside Common Ministries  
Plum Food Pantry  
Society of St Vincent De Paul Stores Division

**Miller Family Fund**

Beaver Area Heritage Foundation  
Beaver Area Memorial Library  
Beaver County Humane Society  
Chestnut Grove Presbyterian Church  
Indiana University Foundation  
TALMAR Gardens and Horticultural Center  
The Oglebay Foundation  
Twelve Loaves  
West Liberty University

**Nolte Family Fund**

McMechen Volunteer Fire Department Inc.

**Ohio Valley Jaycees Charitable Fund**

A Special Wish Foundation Ohio Valley Chapter

**Patrick J. & Kathleen McDermott Fund**

FACTS Impact Fund  
Janie Altmeyer Think Pink Fund  
Oglebay Institute  
River Valley Health Foundation Inc  
Wheeling Symphony Society, Inc.

**Women's Giving Circle**

Women's Giving Circle Endowment

**Phil Lewton Memorial Sportsmanship Fund**

Bridgeport Exempted Village School District  
Cameron High School

Linsly School  
St Clairsville City Schools

**Romeo & Elsie Reyes Family Fund**

St. Michael Parish  
Women's Giving Circle  
WVU Foundation Inc

**Southwestern Energy**

Bethlehem Elementary School  
Brooke Middle School  
Central Elementary  
Hilltop Elementary School  
John Marshall High School  
Ritchie Elementary School  
Sherrard Middle School  
Warwood Elementary  
Washington Lands Elementary School  
West Liberty Elementary

**Stealey Community Fund**

Adams House Ministries/Middlebourne  
United Methodist  
ArtsLink, Inc.  
Council of Senior Tyler Countians, Inc.  
Middlebourne Baptist Church  
Middlebourne Park & Recreations Facilities, Inc  
SilverStar Group Ltd.  
Town of Middlebourne  
Tyler Consolidated High School  
Tyler County Public Library  
Tyler County Schools  
Tyler County Youth League  
WVU Foundation Inc

**Stuart and Stephanie Bloch Memorial Fund**

Elmhurst - The House of Friendship

**Susie Fadoul Memorial Fund**

Elm Grove Elementary  
Middle Creek Elementary School

**Thieroff Family Fund**

St. Mark Evangelical Lutheran Church  
St. Matthew's Episcopal Church  
The Oglebay Foundation  
Valley Hospice, Inc.

**Vaughn Family Fund**

Appalachian Outreach, Inc.  
St. Clairsville Area Soccer Association (SCASA)

**Watkins Utica Fund**

St. Clairsville Public Library Foundation Fund

**Wetzel Family Fund**

FACTS Impact Fund  
GRACE Presbyterian Church  
NAMI of Greater Wheeling, Inc  
Pelotonia  
West Liberty University Foundation

**Wheeling Automobile Club Fund**

Art Works Around Town  
Augusta Levy Learning Center  
CASA for Children, Inc.  
Gilbert S. Bachmann Memorial Fund  
Jerome B. Schmitt Scholarship Fund  
King's Daughters Child Care Center  
Laughlin Memorial Chapel  
Linsly School  
Madison Elementary School  
Marshall County Historical Society, Inc.

Moundsville Historic Landmarks Commission  
Moundsville-Marshall County Public Library  
Ohio County Public Library  
Ohio Valley Recovery, Inc. - The Unity Center  
Simpson United Methodist Church  
Soup Kitchen of Greater Wheeling, Inc.  
The Oglebay Foundation  
Wheeling Country Day School  
Wheeling Health Right, Inc.  
Wheeling Landscape Commission  
Wheeling Lions Club Charities, Inc.

**Wheeling-Nisshin Fund**

Brooke County Schools

**Women's Giving Circle**

Crittenton Foundation, Inc.  
Girl Scouts of Black Diamond Council  
Greater Wheeling Coalition for the Homeless, Inc.  
Municipal Park District of Powhatan Point Ohio  
Oglebay Institute  
Ohio Valley Health Center  
SMART-Center  
Wheeling Health Right, Inc.  
Young Women's Christian Association of  
Wheeling, WV

**WV Key Club District Fund**

The Capital District Kiwanis Foundation

## Donor Designated Funds

**Amaya-Johnson Fund**

International Ministries

**Andrew Goldstrom Fund**

Preston County Schools

**Barbara A. Steele Fund**

Bethlehem United Presbyterian Church  
Ohio County Schools

**Bellaire Emerging Leader Award Fund**

Bellaire Local School District

**Benjamin C. Ybanez Memorial Fund**

BMG Transportation, LLC  
IC Cab  
Kroger

**Bennett Family Fund**

Weirton Heights Church of Christ

**Boots Jarvis Memorial Fund**

Friends of Paden City Pool

**Brigid O'Brien Fund**

The Oglebay Foundation

**CCHS Scholarship Fund**

Central Catholic High School

**Charles & Mary Gantzer Fund**

Our Lady of Peace School

**Cochrane Moneske O'Brien Charitable Fund**

John Marshall High School Scholarship Fund  
Moundsville-Marshall County Public Library  
Sun City Center Emergency Squad



**Coudon Hall Fund**

Linsly School

**Courtney & Danielle Block Memorial Scholarship Fund Sponsored by UPS**

Our Lady of Peace School

**Deever Family Fund**

House of the Carpenter  
North Wheeling Community Youth Center  
Soup Kitchen of Greater Wheeling, Inc.  
The Salvation Army, Wheeling  
United Way of the Upper Ohio Valley

**Earl Gompers & Bernice Grewe-Gompers Fund**

Central Catholic High School  
St. Michael Parish  
Wheeling YMCA

**Edna Kiger Rapp Fund**

Tyler County Schools

**Elikan Fund**

Barnesville Hospital Association, Inc

**Elizabeth Stifel Kline Fund for the CFOV**

Community Foundation for the Ohio Valley

**Elizabeth Stifel Kline Fund for United Way**

United Way of the Upper Ohio Valley

**Evelyn G. Engler Fund for the Seeing Hand Association**

Seeing Hand Association

**Evelyn G. Engler Fund for Wheeling Society for Crippled Children (Easter Seals)**

Easter Seal Rehabilitation Center, Inc

**Franco J. DeSantis Memorial Fund**

Madonna High School

**Friends of Wetzel County Animal Shelter Supporters, Inc. Fund**

Wetzel County Animal Welfare League

**George V. Thieroff, Sr. Donor Designated Fund**

United Way of the Upper Ohio Valley

**George Zatezalo Memorial Fund**

Weir High School

**Gilbert S. Bachmann Memorial Fund**

Linsly School

**H. Lawrence Jones Fund**

Ohio County Schools Foundation  
United Way of the Upper Ohio Valley  
Wheeling YMCA

**Helen P. Rowley & Leonard Rowley Memorial Fund**

CEC / Seabee Historical Foundation  
Episcopal Relief & Development  
Peterkin Conference Center  
St. Mark's Episcopal Church  
St. Matthew's Episcopal Church  
The Salvation Army, Wheeling  
Washington National Cathedral  
Wheeling Health Right, Inc.

**Irene Meagel Fund**

Wheeling Mt. Zion Cemetery Corporation

**James & Betty Kinsey Legacy Fund**

Cameron Community Health Center  
Cameron Volunteer Fire Department  
First Presbyterian Church of Cameron  
Moundsville-Marshall County Public Library

**John & Alia Karras Family Fund**

St. John the Divine Greek Orthodox Church

**John Marshall High School Scholarship Fund**

The Marshall County Educational Foundation Inc.

**John Oliver Rankin, M.D., Memorial Fund**

West Virginia American College of Surgeons

**Julia Schaltenbrand Endowment Fund**

Mary H Weir Public Library  
Weirton Christian Center

**Kalb Family Fund**

Fairmont State Foundation

**Kelly Dolan Memorial Fund**

St. Mary's Catholic Church

**Lawrence E. Bandi Fund**

United Way of the Upper Ohio Valley

**Lee Ann Foundation for Victims of Breast Cancer**

Wheeling Health Right, Inc.

**Leon Berze Memorial Scholarship**

Buckeye Local High School

**Lisa Cockayne Animal Care Fund**

Marshall County Animal Rescue League

**Madalyn McCreary Memorial Fund**

Mt. Olivet United Methodist Church

**Mary's Provisions for the Poor Fund**

St. Michael Parish

**Messino-Wehrheim Fund**

John Marshall High School Scholarship Fund

**Michael and Betty Karras Memorial Fund**

St. John the Divine Greek Orthodox Church

**Music Magic Fund**

Ohio County Strings Association

**Nolte Animal Fund**

Marshall County Animal Shelter  
Ohio County Animal Shelter

**Paul H. & E. Ruth Eddy Memorial Scholarship Fund**

WV School of Preaching

**Racam Agriculture Education Fund**

Tyler County Schools

**Rachael Worby Scholarship Fund**

Wheeling Symphony Society, Inc.

**Robert W. Schramm West Liberty State College Science Fair Fund**

West Liberty University Foundation

**Robin Drennan Memorial Volleyball Fund**

Weir High School

**Roslyn & Charles Lando Fund**

Ohio County Schools

**St. John the Divine Living Memorial Endowment Fund**

St. John the Divine Greek Orthodox Church

**St. Matthew's Lutheran Church Fund**

City of Benwood  
City of McMechen  
Feeding Body and Soul Community Kitchen  
Lutheran Campus Ministry at WVU  
Marshall County Senior Services  
Moundsville-Marshall County Public Library  
Salvation Army - Moundsville  
United Lutheran Seminary  
Young Women's Christian Association of Wheeling

**W. Frederick Bartholomew Fund**

Trinity Evangelical Lutheran Church

**W. Thornley Hunt Memorial Scholarship Fund**

St. Clairsville-Richland City School District

**Wes Wagner Art Scholarship**

Bethany College

**Wheeling Health Right Watkins Family Endowment Fund**

Wheeling Health Right, Inc.

**Wheeling Middle School Boosters Club Fund**

Wheeling Middle School

**Whipkey Charitable Fund**

Camp Kno Koma  
WVU Foundation Inc

**William H. Homan Founders Fund**

Community Foundation for the Ohio Valley

**WPHS Athletic Boosters Fund**

Wheeling Park High School

**Youth Club of Marshall County Fund**

Simpson United Methodist Church

## Agency Funds

**United Way Endowment Fund**

United Way of the Upper Ohio Valley

**Elizabeth A. Kyle Fund**

United Way of the Upper Ohio Valley

**Wheeling Health Right - Weidle Memorial Fund**

Wheeling Health Right, Inc.

**Lesley W. Galinski Endowment for Music and Fine Arts Fund**

Wheeling Country Day School

**YMCA of Wheeling Endowment Fund**

Wheeling YMCA

**Mountain Heart Fund**

Mountain Heart Foundation

## FIELD OF INTEREST FUNDS

**Joseph & Marilyn Fraker Animal Care Fund**  
Marshall County Animal Rescue League

**Kathryn B. Snively Fund**  
1st Presbyterian Church

**Marilyn A. Collett Memorial Fund**  
City of Sistersville

**Kenneth R. Dennis Field of Interest Fund**  
Early Literacy for Belmont County Fund  
East Central Ohio Educational Service Center

**Williams Fund**  
Laughlin Community Center

**Margaret Dankworth Memorial Fund**  
National Trail #348 of Questers, Inc

**MGC Fund**  
Ohio County Schools

**Williams Fund**  
Ohio County Schools

**Marshall County Area Fund**  
Simpson United Methodist Church

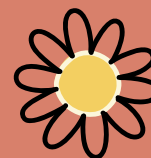
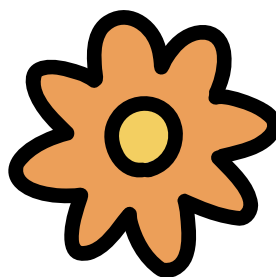
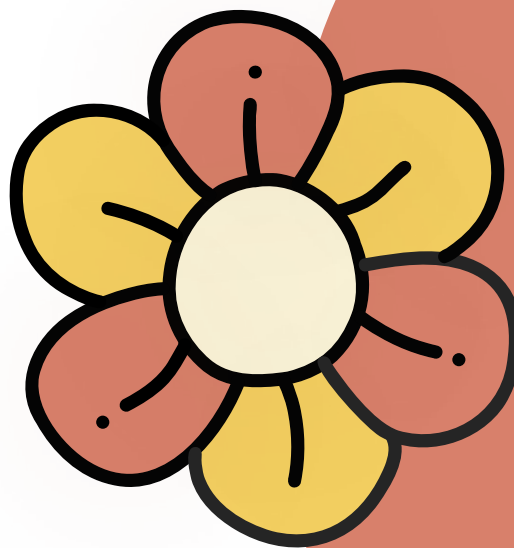
## UNRESTRICTED FUNDS

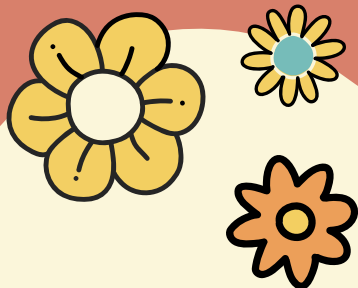
**Community Impact Fund**  
Bridgeway Capital  
Brooke County Public Libraries  
Catholic Charities West Virginia  
City of Steubenville Parks and Recreation  
Elmhurst - The House of Friendship  
Faith in Action Caregivers, Inc.  
Labelle Neighbors Who Care, Inc.  
Laughlin Community Center  
Ohio Valley Recovery, Inc. - The Unity Center  
Ohio Valley Youth Network  
St. John's Home for Children  
WVU Foundation Inc  
Youth Services System, Inc.

## SPECIAL PROJECT FUNDS

**Wheeling Dog Park Fund**  
Wheeling National Heritage Area Corporation

**Agudas Achim Congregation Cemetery Fund**  
American Legion of Bellaire, OH Post 52





**Ready to start a fund with the  
Community Foundation and  
make **YOUR** impact?  
Contact us to get started!**



**COMMUNITY  
FOUNDATION**  
FOR THE OHIO VALLEY



**CFOV.ORG**

**304.242.3144**

COMMUNITY FOUNDATION FOR THE OHIO VALLEY  
1226 CHAPLINE STREET • WHEELING, WV 26003

**CFNS**

**ACCREDITED  
FOUNDATION**

Confirmed In Compliance  
With National Standards For  
Community Foundations

**A FUND FOR ALL TIME SUPPORTED BY AND FOR THE PEOPLE  
OF THE UPPER OHIO VALLEY**

The Community Foundation for the Ohio Valley, Inc. is registered as a charitable organization with the West Virginia Secretary of State. A summary of the Foundation's registration and financial documents may be obtained from the Secretary of State, State Capitol, Charleston, WV 25305